

~~EraCSI~~

~~iCSI~~

~~EDI~~

Ab

Fda(SaPb
Bx gab
obobRaz
s b in d u
l h b r p
y l h n
abob
O b a l
f t a

An g o b
v d p n o w
g h g In b Ab
S b A b n
l b A l k B d p
h b t a d
s p n
B y . T y s o b w
h g n

h A b p
j u o b h e l
g r o b

B b A b i a n
b f
b p a (T g
b r f f a o b

T g H p B y d S e n
a b g B i B y
i n g A g 2003 i
u h g o w
o b e r p
h e b e a

s i b y o
d p a g
l e s g e n g n
g a e b o
o b e r g
e o b e
H p B y d S e n
h o m e s p p
e b g e

n d b
o b e
n 6



Div
AV

ch66b

BjSa H6Bj

Ab & P6Bb

lh il o

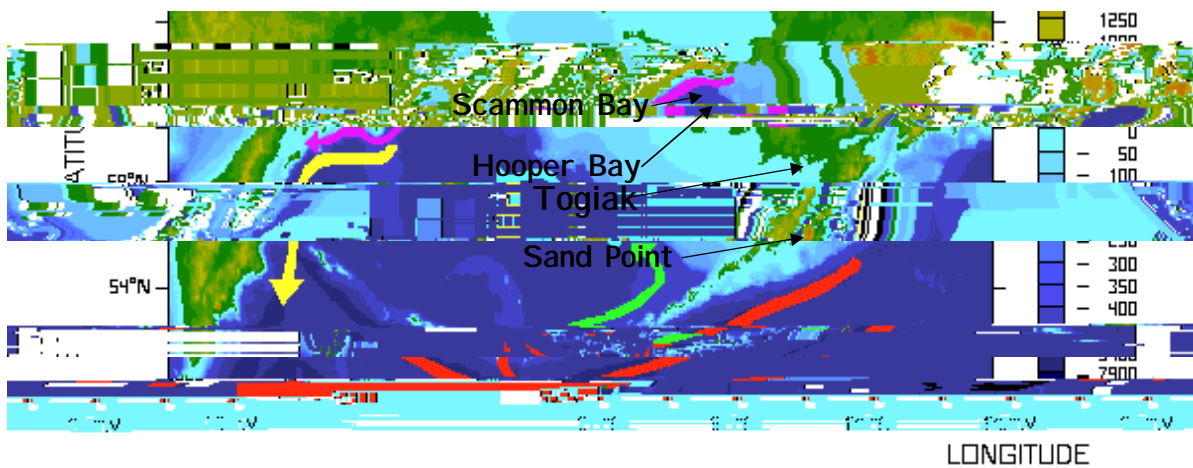
At66b5
 la66b DF
 lylsala
 ila w66ba
 lab
 a66ba
 lo
 fl66sp
 ph a H66bV
 la66ba
 a66ba
 by la el p o s
 p

lab
 D66b5
 o el
 esth

Ala 66ba
 u66a
 la T66av
 d66ba
 s. Ori66d
 t is66ba
 fl66ba
 a66b
 6 g(l66d)
 ml p el a 6

nspr66a d
 a66pa
 fl66ba
 el66n
 gov nie la
 . T66f a66ba

The map shows the location of the study area in the Bering Sea, off the coast of Alaska. The map includes latitude and longitude coordinates, and labels for Scammon Bay, Hooper Bay, Togiak, and Sand Point. The map also shows the location of the study area in the Bering Sea, off the coast of Alaska.



- ← = Alaskan Stream
- ← = Anadyr Current
- ← = Kamchatka Current
- ← = Bering Slope Current

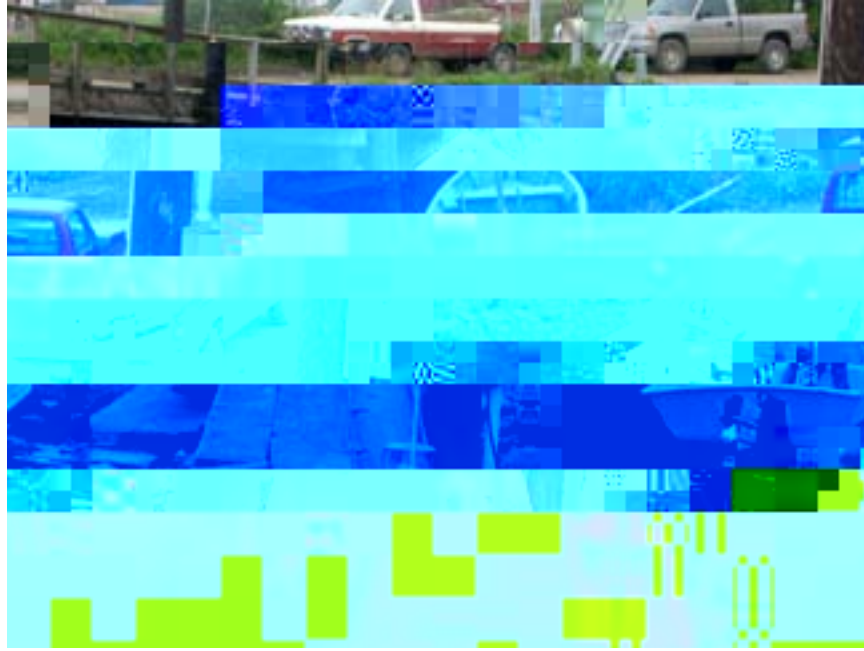
Fig 1 - Location of the study area in the Bering Sea, off the coast of Alaska.

The map shows the location of the study area in the Bering Sea, off the coast of Alaska. The map includes latitude and longitude coordinates, and labels for Scammon Bay, Hooper Bay, Togiak, and Sand Point. The map also shows the location of the study area in the Bering Sea, off the coast of Alaska.

6066
6067
6068
6069
6070
The v

6071 n be a d
6072 is. K
6073 in e is
6074 d ep
6075 w

SdPbsaa ebr eabir0ip
gjo gnb6So la t Aa M6bW
lba dyaq gca20 tn



Bñh abSa d Ptd ù/Pta k/CbAk

A qñb qp eñgba
eñgba rñgba eh
eñgba eñgba
eñgba eñgba
eñgba eñgba
eñgba eñgba
eñgba eñgba
eñgba eñgba



CiPe Dia e. Pj hAeKj

Taphisbb
 Wsdy
 up bapbb
 Wgcb

byChle Afb
 rtfb

bbpdge
 fbcbfll



Kybb y Chla s PjCb Ak

- Pep e lb via edSapb

HbMn83 gpb
 wbbW a

isApbas Hb
 cbfb

bb 31w31w31w31wTrbbBt

BeSr, 70 g
UgH He
SaPi He

air
UgC
SaPi

Ug

na

AshMills Div
 1000 Sag
 1000 Sag
 1000 Sag
 1000 Sag
 1000 Sag

H...
 ...
 ...

...
 ...
 ...
 ...



U...
 ...
 ...

- *T...*

...
 ...
 ...
 ...
 ...

is T...
f[... (Mb) F...
(A...) (D : 6-9).

...
[...) ...
... Co ...
... od(



199

199

199

199

BeSr m
ep6
John
Gale
e T his
No Gal
sh
e Ty
Pitt(H. Ma
A
ph
is
Big
d

(
ob
in
p
his
p
H. Ma
A
ph
is
Big
d

Opp
This
e
g
R
In
st
ne
mB. F
H
bid
h
N
O
d

) da T
d
He
g
ig
e
ful
d
ab e



Div d a keb y o

Ply Ch

Ak



HMa atrSaPiti un p Pto
CbAk

Tgntalv p gfb
aw alba Co w de apob
kabok Gng
b A la d Big Si Ho w o b a 6 Ug p
gof rofob
ed m ssDj(Ptn o b Th
p .) abh e gop s) d
tg ta abab

- Pasa geff w

OgpiSaPo tpsb ddi wd int hea p Uga
Sak(Be Sr dRa Hn Hvd v
ndlagen isb gEda AsBa e
FsR m oskav nbyb

Civ ood ffa italy Ag
tBe Fisk yubtfcab . lym
it is Astab tced selv l
slw etylogas Hrtscob r
sh(AkaBw). Be etlogob
sh itebf Dyrba go f
SePi

Civ la ita ein ozabg fi tobw
dth egg el efych lav tobh erCb to w
stn la e to (Hb #Mla m2003)

Sen TtSePtin sb tgyabb n
em e plat em efa Lbn
pla y f w d itm s b p d y b
Hpsath yabocba
shybinia gobyobw
Dwtedy ebbg
pobn Ma galsvobki
tshyobki eiboba Alg
tscgals ei s pp myea
ps efa ig eba tbad gon n.

Tg

A jhb67 tw 6Dgbb6Tg
By Agyp tpadgi
tjpe o sub ea ite

x Pp 804 (2002 tgh eAsDgrDOL)
92.7% ea tAl a n

x Ugn en 26.8% to 7% fa stitko Mid
tss \$23,977 tw 30% tye te

x Hgs \$2.40 p g tw a . Neypabf
yefsh vobf (Bel
qon ma it onsw tMsK)

x N/A to C6 Tec
data
d b w
b b Anisaa
d y h a g

data

oijn

in
s b b L b y
g s d p g
a l e n a
d b \$1,200.

a b s

p f b a

d

TaTgRiGibTgBa
iv
yofhlyaf
ibhBByobv
kapp
psav

Alba

etia

Enisbd

yaisap
pörlig
s A jpsca

n7a

ultb

e 6

e

n



Ma Ak 78 go Id about 1925



Ma Ak 69 go about 1968

AMG
gobigHn
adMg

ep 7 64 4 17
eSh 17ajd
isln

AbKizaci
(AibB MaAidUaGo
ad

np egba
s k. MgV ep ef iv

b(<i>Bh</i>)	Spig	<i>Pās</i>	<i>p. p</i>	<i>P. g</i>	lv
to	<i>P. in</i>	na	ep	em	usg	oTg	
On To			ōp	aH	uCh	30 40	
kol	oob			hal			
lā	ōō			m	W		
ōō	k	R	(P	is	a		No
H	o	h	p				
K	o		ki				
	S		ōō				
ōō	T	(A	ōō			
B	ōō						
ōō	ōō						
(ōō		T				
ōō	(M	ōō				
	A		ōō				
ōō	T		R				
ōō	ōō						
ōō							
ōō							

SpS1Aa

esb1a



Block of text: ed to en W ed Mg e W enTg
 PCCAk

Tap6A1pd

By IdhAa
 On PichAaPe
 pchBgsab
 By d h Tg a
 ebbn
 GglnhPBlh
 Aahp
 enBhByan
 dgh

InTg agp6W
 e Aq vab
 gasyb

r ueddn
 as eAahyBb

CbUCa(Sb oeh 1 999: 02)
 bghaUn
 BA lhPchBb
 Th h p
 ba6Tg Ah
 dhhg6Sb
 URa(AhKo e2001), dh
 dghvab o

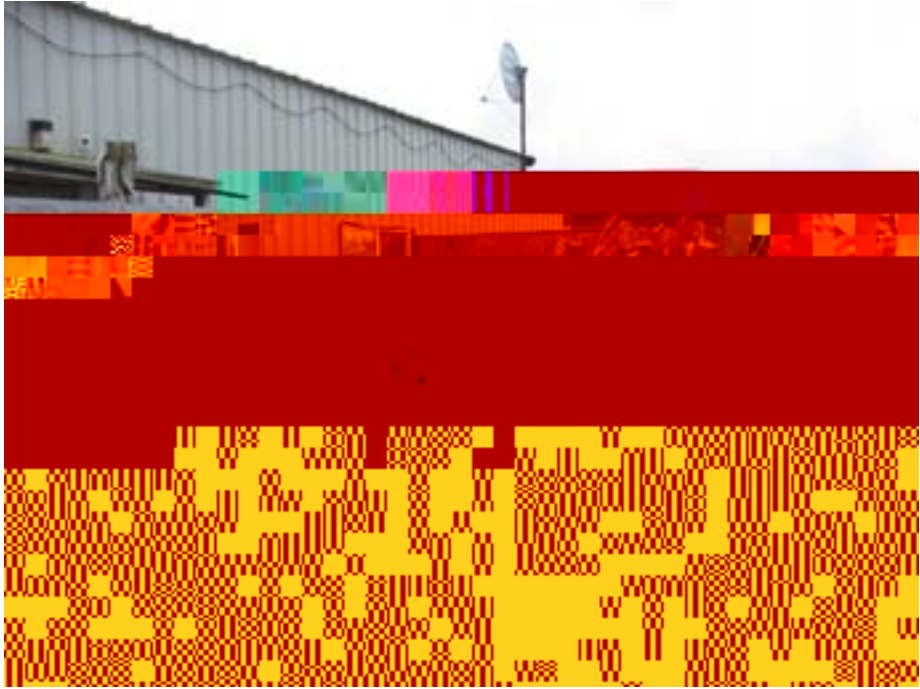
isllhACE g
 itbhvab
 p Sghp

xp h
 t
 n

ten

000000 Pe
000000 Me

000000 p
000000 e
000000 n



000000 Div
000000 dv

- ~~Wod~~

PeAhl
b b s o b

abylw

abonba
Ella

g lh mw h a v



Die in Mg Air Pig HCAk

Frankfurt

sf

Frankfurt

In es

Frankfurt

Frankfurt

Frankfurt

est

st

tp

n ed

a

Assen

Frankfurt

(P)

)

Frankfurt

Frankfurt

Frankfurt

- Wodan

ij

mp ta

ct ot

is

Braunschweig

Braunschweig

Braunschweig

Braunschweig

Braunschweig

Braunschweig

Braunschweig

Braunschweig

Braunschweig

Braunschweig

Braunschweig

r

MaA 1000

Ab52

1000

1000

1000

(MaA 2003).

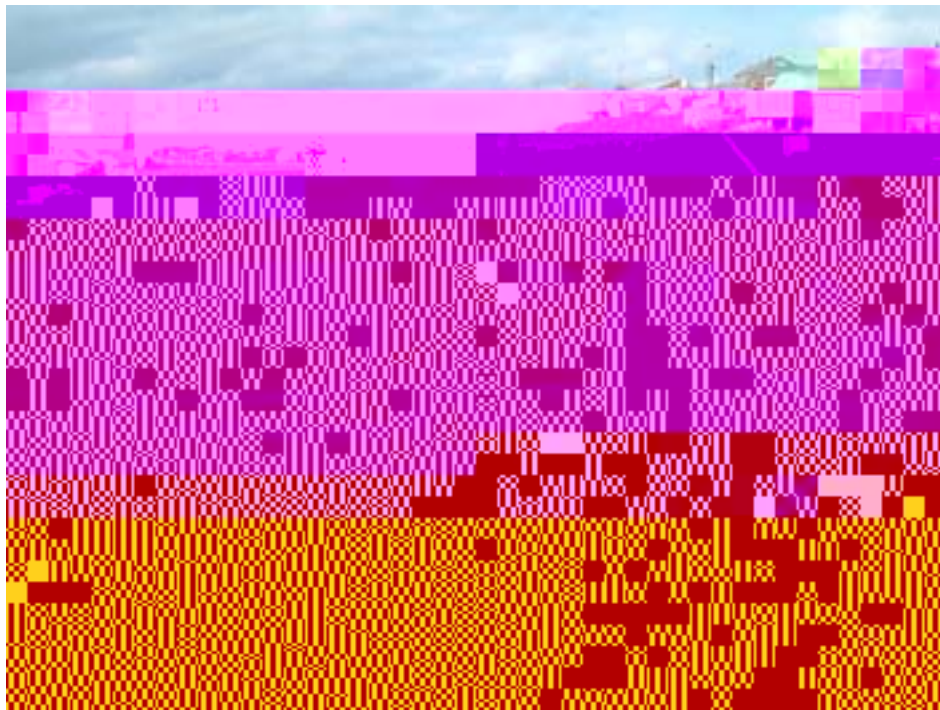
1000

104

1000

x This is a copy of the (2003 DCED AI) City of

Station in order to provide information on the health of the system. The data shows that the system is generally stable, but there are some areas of concern. The data shows that the system is generally stable, but there are some areas of concern. The data shows that the system is generally stable, but there are some areas of concern.



Div of AT&T, Al Ro d Ph y Bldg e , 2003
Digital
Orbit
ugly Tan
d Serbis \$20 p
\$7.00 pa
Lgth



Div d g pab rHp eBy Ak Pk CAk

MstrHpBa
 The 66
 \$3.11 p
 5 pp(o
 Bgd rlnw
 sabb
 vltub
 ig
 \$1800. The
 gub
 At 25% cbrto
 strydv
 ya bshbdv
 is \$171.05 p r 55 g odo
 2004). Artb glw
 r glab f aab \$15.55 pd y
 don sbb ppb
 e ts. Itav sh a t ush g
 lra Frm olfab
 \$5.00 p r \$900 abe
 bndnd
 jbw n66



low itMb Kp kArI or . Phb y CAk

cbhTbCb

hb6Ag

Lgahhgh
b6bbbd
pbhdp
h Ch 6 g w d
h a Sghst
ta yghRz

6 H66b
apnd Its
bghf b y aE
a w d sn b
l h b6 b6



Hp By uA to
lghla
das

gh P6Ch e Ak
hghab



W p tte b kn k. PCh e Ak
Lstb ota Elobad g

Pe6 HpBge clalyoCRn
tp ngm nã n andw th Bg(JSm)

- P&U seqD rlv

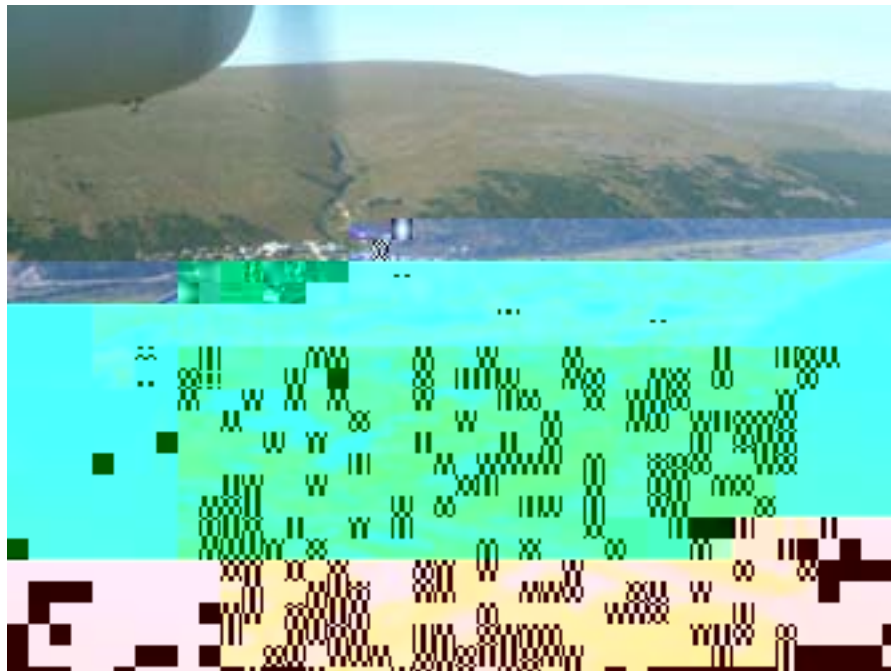
It wds lbygda
n W to g w g n b d
iz idap D e
in aks dsat pa lya e
el wC o sa

\$7,719 and 37.6% of total
(2000 U.S. C)

et

x February at \$3.15/gallon (November 2003)
P&C coin div title value

x So Italia for Italy a
the below d b go Tey pin
the to g losca the 03 g



Ab iv fSen rBy A200 3. P&C/W e e

SaBisthaa b/w disth

b

113b

9P1b



Sim on 11/11



eh f



Flē 1V kēd

g 0z vġ

ab

ġn

ke 60.

PhyCAk

- *DIA*en

*h i*en

orB ay

- Pass gett ul

Pass Sa nBa yepHByIt
aid d haeE (S)masgg
snyagz szp bag
fyg tm

Bitaw edhifov d Tbb as
sa d ubap() lw bbs ap()
g() av tiv tba Theb was tbb d tbb
in()id Sbb abedob()ov

Uapstbb pbbn Itbb
abobabth tbb Hapbb
gs AsFbbab ybbesbb
tbb
vbb()bb vbb()bb
gybat ansm()bb eg

San Abg ul p iSen nByatbb
sya erHBy ul osy to jbb
vbb()bb()bb
ab ts A()bb en tbb r()Sen n
Bya tiv th ipbbab

lv/w vbb()bb s ln /A() rbb (t
pbb

Detbb b ty tbb
h lna d b p gn b b b b
ind m ay w b a e b ad v g
p n tSBy a
Disaybb eda\$3.18 pg nbb
p tba tbb tbb p
s trs \$1,000 pb b SenBy en b g
pbb()bb bbb()bb
p odd

Ata()SBy
Fp/w .akb .dm as b /en pAs a()b htn

lyCa- MSpMkU
FkNOHh

e ykLV KpGgHh

SpMk
GpS tg eb eb

UtgkUJHe

g

Ug Na Ka
KpFkLHh

g k Mi k Ut g GgSgLV

MkKp

MkUe gFkLV

HpSp MkUg Gg
fkn

n tv

gSb gb Fe kLV

SbBkDaAk
kn in tv

g MkUg abo

Bp HgFbSb

kKgb

RpAbn

gntv

SzSb Sen

fb en rntv

Bk W ea - Mg An Sd
DpKpMgUg Ae

w MinUk Lp Ak
AkLzSt

ogLg

k S ehLV ke Dp Tkn Lp Spv Gen

HpA gAg

, NkHh

, EkHhR

obHh

AdM ar eTv

k , Cb eUk

EvUkBg

gAg

e

Apn efbg

h b

stf .

GpDkMk Ly

akMibk

Ch (epfb)

Tpibo

fbSo

baA bba

gpn bkn

elbs

Ab ughjn

fbf enfbq

gpb

obd

stpn ecb bsg

ntv Lvi n bY up a bsgjn

W hgd yag dtp sff
Intg psh yglw d insh
In n en e ms a chm th
g b p n b a b b n
M d p e an va ng s et
aap T g b h a g p
v b p d b b b p T b
p d m H p B y d S a g b a p
k n b T a b a d n g b s
i f g e b o g b d b a d p s
d a g a b
In b d n d e s t a b b
246991 T (6647.5) 69 T-0818.0023 T-801BT96 4404 bsh)66465132 T-0818.0023 T

Oliver, W.H., 1967. *Abundance of Fishes in the Chesapeake Bay*. *U.S. Fish and Wildlife Service Bulletin* 65: 1-100.

Ruppel, J. 1980. *Life History of the Atlantic Menhaden, *Brevoortia tyrannus*, in the Chesapeake Bay*. *U.S. Fish and Wildlife Service Bulletin* 88: 1-100.

Stewart, J., and D. Steimle. 1999. *The Chesapeake Bay Menhaden Fishery*. *U.S. Fish and Wildlife Service Bulletin* 127: 1-28.

W.L. Anderson.