

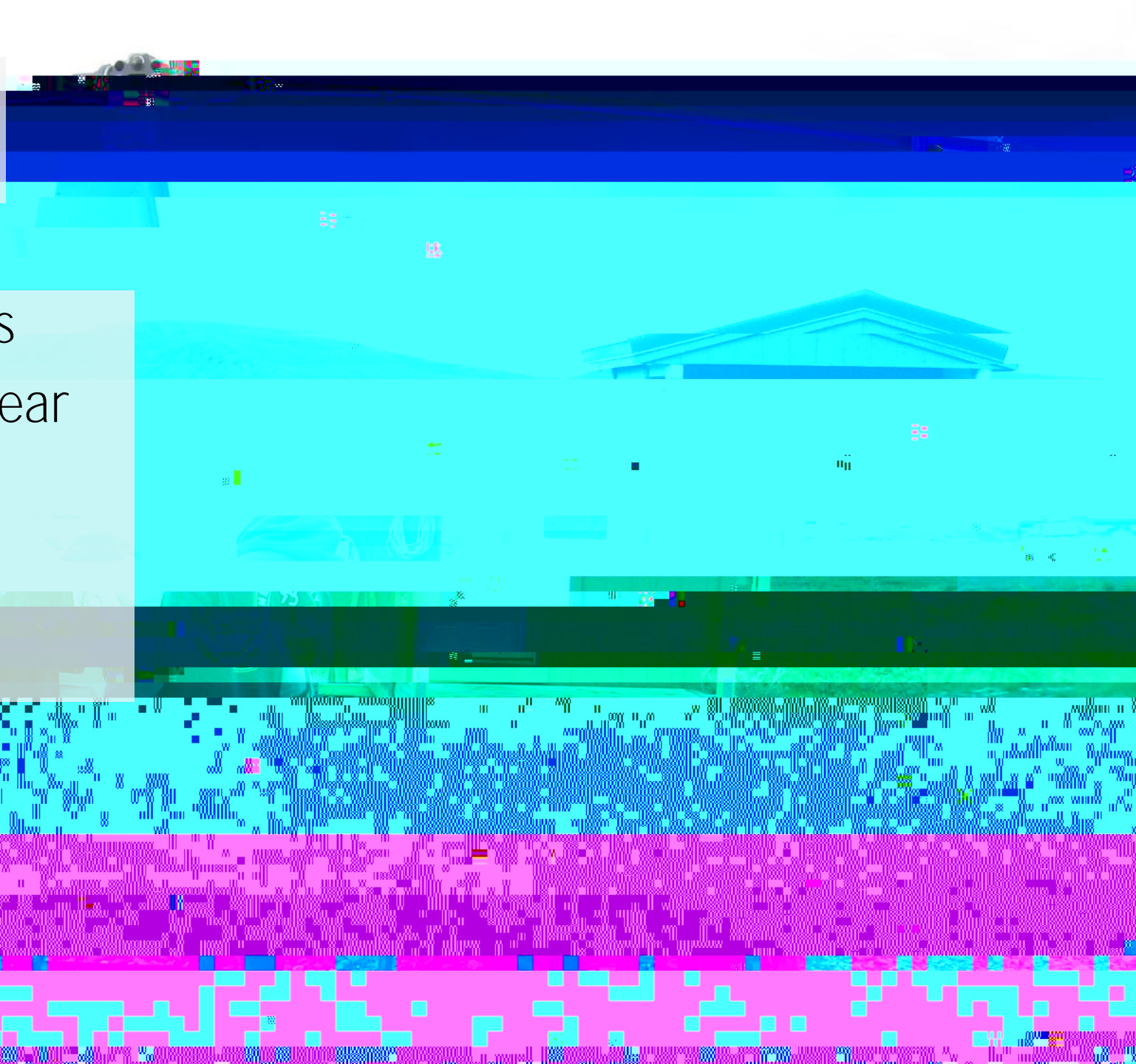
A small helicopter is flying in the upper center of the frame against a cloudy sky. The background is a vast, snowy, mountainous landscape. The text is overlaid on the lower half of the image.

# Toolik helicopter and user day outlook 2017

Dana Truffer-Moudra  
Alaska Project Manager  
CH2M Hill Polar Services  
[dana@polarfield.com](mailto:dana@polarfield.com)

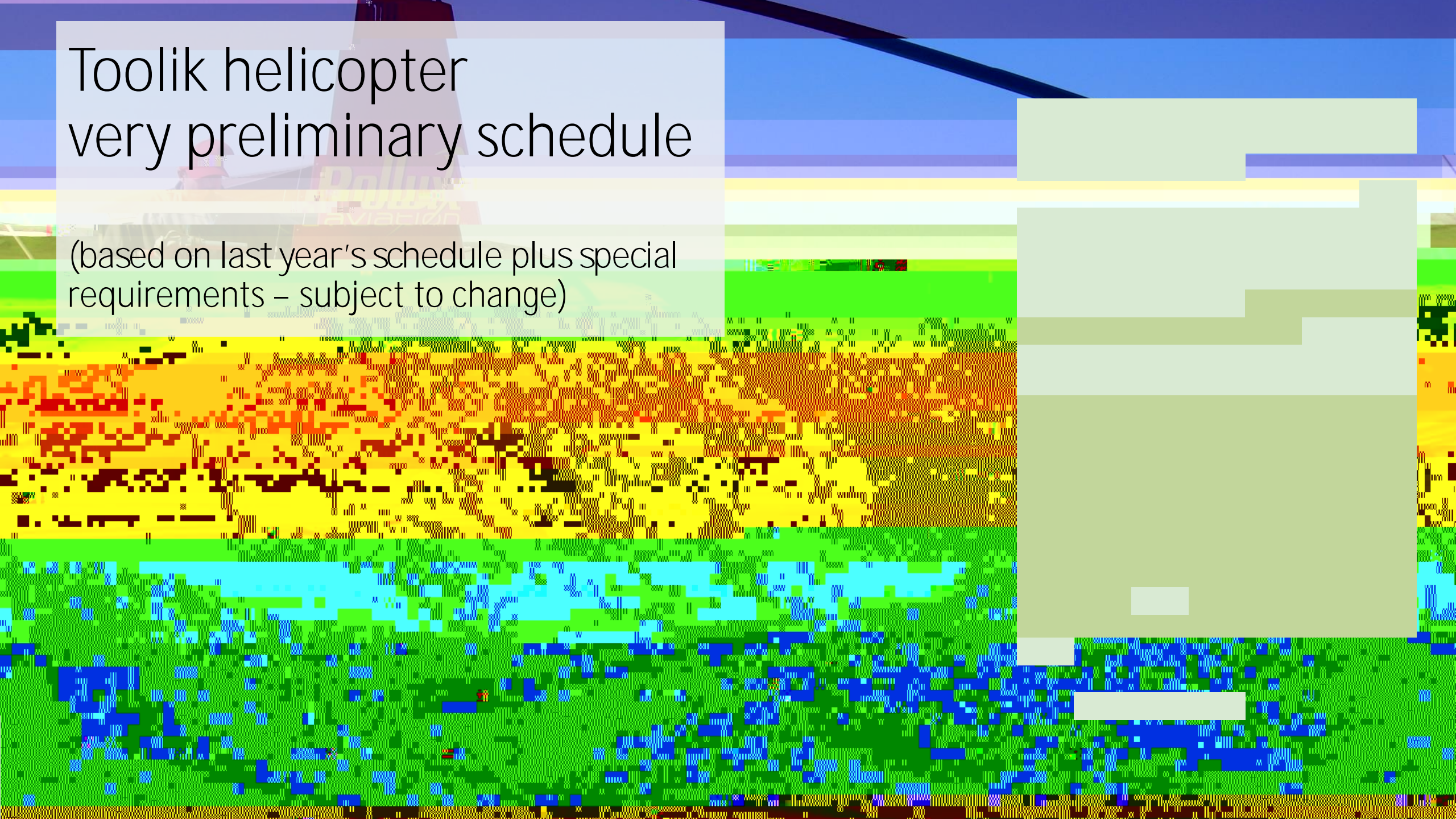
# Toolik helicopter

Increase of funded flight hours  
Mostly same projects as last year  
Early season



# Toolik helicopter very preliminary schedule

(based on last year's schedule plus special requirements – subject to change)



# Toolik helicopter vendor

Last year of the 3 year contract with Pollux  
Pending approvals etc, expect to have Pollux as  
the vendor

# CPS funded Toolik user days for 2017

Just short of 6,500 in our program plan for 2017

2013: 6,470 (6,781 after mods)

2014: 5,238

2015: 6,501

2016: 4,983

2017: ~6,500